



2022-23

ANNUAL REPORT

*studying change to
make change*

TABLE OF CONTENTS

1	Letter from the Director	External Research Grantees: 2023-24	9
2	About LCHP	Then & Now Season 3	11
3	2022-23 LCHP Research	Programming	13
8	External Research Grantees: 2022-23	Summer Research Institute	14

LETTER FROM THE DIRECTOR

We are pleased to present this annual report chronicling the activities of the Luskin Center in the 2022-23 academic year. This year was the first year in which Dr. Rose Campbell joined the staff as assistant director. With Rose's capable assistance, we sponsored a robust array of research projects that stand at the juncture of history and policy, about which you can read below. We were also pleased to host a Summer Research Institute in June in which more than 50 students from UCLA and beyond studied with leading researchers about historical methods and their application to key contemporary issues. The year also hosted a return to in-person events for LCHP after a three-year hiatus due to the COVID-19 pandemic. At the outset of the pandemic in 2020, we launched the LCHP podcast, "Then & Now," in order to provide historical depth to key issues of the day. Over the course of its existence, "Then & Now" has dropped nearly 100 episodes and attracted some 34,000 listeners!

We look forward to another active year of activities in the coming academic year. Please stay tuned for an announcement about our upcoming events in 2023-24. And please don't hesitate to reach out to inquire about our work as we continue to plumb the depths of the past to understand how we got where we are today.

Sincerely,



David N. Myers, Director



David N. Myers
Director



Rose Campbell
Assistant Director

ABOUT LCHP

Vision: The UCLA Luskin Center for History and Policy (LCHP) imagines a world in which leaders, policymakers, and citizens regularly use history as a guide to civic engagement, policy formation, and an alternative and better future.

Mission: The UCLA Luskin Center for History and Policy (LCHP) aims to bring vital historical knowledge, perspective, and analysis to bear on key contemporary issues and policy deliberations.

Approach: We approach our work in the following ways:

Research:

Conducting influential research that models a new form of historically grounded policy analysis.

Education & Training:

Training students and scholars to apply historical research to key present-day questions.

Public Outreach:

Promoting history as a central tool of informed public debate.

Studying Change to Make Change



HISTORY IN THE STREETS

*Street Renaming in Los Angeles:
Commemoration, Policy and the
Politics of Identity*

Tawny Paul, Tessa Fier, Maggie Seay and Rachel Tokofsky

2022-23 LCHP Research

LCHP's research during the 2022-23 academic year explored a variety of important issues relevant to Los Angeles and the surrounding regions. We supported five research teams during the year:

- A team led by Prof. Tawny Paul examined the history of Los Angeles street naming policies and practices. LCHP will support this project for a second year in 2023-24.
- A team led by Prof. Jon Christensen explored the history of the environmental justice movement in California.
- A team led by LCHP post-doctoral fellow, Dr. Ben Zdencanovic, researched the history of California state welfare policies.
- A team comprising graduate students Sammy Feldblum, John Schmidt, and Abbie Cohen examined the place of real estate and real estate investment in the history of the University of California.
- LCHP senior fellow Alisa Belinkoff Katz studied governance in LA city and county.



HISTORY IN THE STREETS

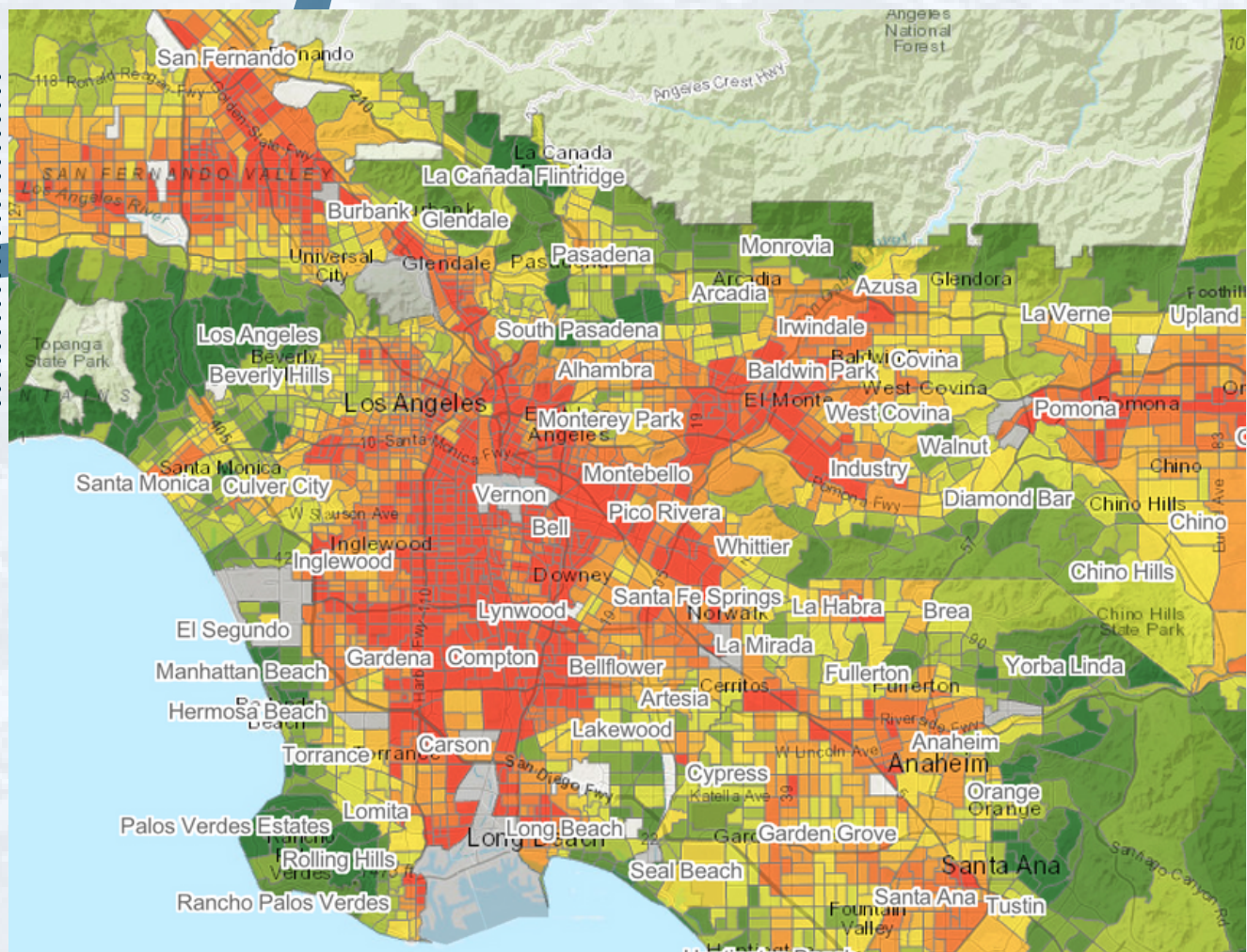
Street Renaming in Los Angeles: Commemoration, Policy and the Politics of Identity

Tawny Paul, Tessa Fier, Maggie Seay and Rachel Tokofsky

History in the Streets: Street Renaming practices in Los Angeles: Commemoration, Policy, and the Politics of Identity

Tawny Paul, Tessa Fier, Maggie Seay, and Rachel Tokofsky

Whether it be city planning or school curricula, tension over how history is represented, remembered and taught has gripped the American social and political landscape over the past several years. The 2020 Black Lives Matter uprisings brought renewed and critical attention to public commemoration, particularly the abundance of statues, memorials and place-names dedicated to the legacies of the Civil War, and how these offer one-sided historical narratives. In order to address these issues of memory, power and identity in the urban landscape, this report focuses on street names as forms of commemoration, using Los Angeles as a case study.



Environmental Justice and Equity: A Historical Analysis of a Productive Policy Dialectic

Isabella Blanco, Alexandra Guadagno, Jason Sutedja, and Prof. Jon Christensen

For four decades the concepts of “environmental justice” and “environmental equity” have been in a productive dialectical tension in public policy in the United States. In this research project, advanced undergraduates Isabella Blanco, Alexandra Guadagno, and Jason Sutedja, worked with adjunct assistant professor Jon Christensen, to analyze the history of that dialectic at the federal level, in the state of California, and at the local level in Los Angeles.



LOBBY AT FIELD HOSPITAL
RICHMOND, CALIFORNIA

The Politics of Healthcare Policy in California

Dr. Ben Zdenecanovic, Sara Ohannessian, and Lauren Heiberg, with additional research by Emilia Fergadiotti and Emiko Levings

This research project traces the political, economic, legal, and social evolution of healthcare policy in California from the nineteenth century to the present, with an eye to how a historical perspective can inform current healthcare policy issues and debates. The project explores state healthcare policy as contested terrain fought over by labor unions, insurance companies, physicians, think tanks, policymakers, grassroots activists, trade associations, and corporate employers. We pay particular attention to the ways that California has been, at various points, both a catalyst and microcosm for broader, national healthcare policy debates. Our ultimate aim is to develop a set of actionable policy recommendations, informed by historical analysis and targeted to state and local policymakers, that address ongoing current policy issues such as Medicaid “unwinding,” the healthcare implications of the state’s drug and homelessness epidemic; COVID and workers’ compensation; and disparities in access to healthcare along lines of race and immigration status.



UC Real Estate

Samuel Feldblum, John Schmidt, and Abbie Cohen

This research investigates real estate as an asset class in the sweep of the UC's financial history. In the 1980s, the university's endowment and pension funds grew in size and complexity as state funding declined, amid what higher education scholars refer to as the privatization of the public university. Real estate came to occupy a position of increasing importance as a financial asset for the university after the turn of the millennium, and especially in the years after the financial crisis. Drawing from the minutes of the UC's investment committee and from the UC Chief Investment Officer's annual reports, this report elucidates the UC's buildout of real estate investment capacity, culminating in the current moment: a massive investment in Blackstone's Real Estate Investment Trust, allowing passive management and high returns, alongside renewed plans for an actively managed LLC with which the UC would control its own investment properties.

Research Grants: 2022-23


Every year, LCHP awards grants to teams who conduct collaborative research or hold public programming that bring historical analysis to bear on key issues of contemporary relevance. During the 2022-23 academic year, LCHP awarded funding to support three major research projects.



The Policy and Politics of Amazon Highway BR364 : From Socio-Environmentalism to Eco-Plunder Economies

Researchers: Gabriel Suchodolski, Professor Susanna Hecht

This project followed the controversial road development of the major connecting highway of the Amazon Rainforest and the fraught politics from the 1980s to the current day.



Aspiring Towards a Better Future in STEM: An Examination and Reflection of Pedagogical Shifts Among Life Sciences Faculty

Researchers: Ngoc Tran, London Williams, Professor Kevin Eagan

This project examined the connections between pedagogical practices and support for students from backgrounds and communities that have been historically and systemically excluded in STEM.



Historical Framings for the Right to Food in Los Angeles County

Researchers: Kyle Winterboer, Professor Michael Roberts

This project examined how the history of the internationally recognized right to food can be applied to support local community gardens and urban agriculture initiatives throughout Los Angeles.

Upcoming Research Grants: 2023-24

We are excited to introduce our 2023-24 research grantees.

How Soviet Prison Subculture Shapes the Russian Political Landscape

Researchers: Lydia Roberts, Marianna Petiaskina, Professor Igor Pilschikov

The Russian invasion of Ukraine has confused many in the Western world, who struggle to find logic behind the military choices being made. This project suggests that social attitudes towards 'gangster-like' management of social processes in Russia contributed to Russian decision-making in Ukraine, and suggests that the roots of this logic might be traced back to prisons of the Soviet era.



Defining the Role of Indigenous Nomadic Groups in Egyptian Policymaking

Researchers: Maryan Ragheb, Matei Tichindelean, Professor Willeke Wendrich

This project will examine the lifeways and interactions of indigenous groups across the Eastern Desert of ancient and modern Egypt and Sudan, exploring practices of resource extraction as they relate to ancient and modern strategies for cooperation between nomadic communities and policy-makers.



Kamau Daáood's Archives: Documenting Black Los Angeles

Researchers: Samuel Lamontagne,
Prof. Robin D.G. Kelley

This project will focus on the work of Kamau Daáood, an influential artist, activist, and educator, whose legacy continues to impact his community in South Central Los Angeles. Daáood's rich collection, reflecting decades of work with Black Los Angeles arts, culture, and activism, will form the basis of a community archive.



The Evolution of the Fairfax District: Exploring the Origins, Changes, and Impact on the Jewish Community in Los Angeles

Researchers: Stephanie Zager, Michaela Esposito, Ella Kitt, Benjamin Kersten, Prof. David Myers

This project will assess the impact of rising anti-semitism and the Covid-19 pandemic on Jewish-owned business in the historic Fairfax district of Los Angeles.



Then & Now Season 3

Then & Now, LCHP's podcast, connects past to present, using historical analysis and context to help guide us through modern issues and policy decisions. Every other week LCHP interviews historians, policymakers, and thought leaders about what happened then, and what that means for us now.



By the numbers:

35,000

lifetime
downloads

8,500

Season 3
downloads

22

Season 3
guests

22

Season 3
episodes

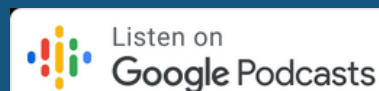
95

lifetime
episodes

*"Who's Afraid of
the
Administrative
State? The
Supreme Court."*

most popular
episode

Listen to Then & Now wherever you listen to your podcasts!



Then & Now Season 3 Notable Episodes

Episode 1: Who's Afraid of the Administrative State? The Supreme Court. A Conversation with Julian Davis Mortenson

This past June, the Supreme Court reached a decision in *West Virginia vs. Environmental Protection Agency* that curtailed the EPA's ability to regulate carbon emissions from coal plants. Behind this ruling was the principle of "non-delegation" — the idea that Congress cannot delegate its legislative powers, or rule-making authority, to other entities such as regulatory agencies.



Episode 7: Israel and the Specter of Fascism Today: A Conversation with Omer Bartov

Now starting his sixth term as Prime Minister, Netanyahu has aligned himself with a number of far-right parties, commencing what some observers have described as a "fascist" era. Professor Omar Bartov discusses the conditions that have given rise to fascist governments and applies his deep historical knowledge to the political situation in Israel today.



Episode 9: China-US Relations in the Age of the Indo-Pacific: A Conversation with Rosemary Foot

This episode explores the recent history of China-US relations, why China sees the Indo-Pacific bloc as the new NATO, and how the country seeks to reshape the norms dictating diplomacy and development.

Listen to Then & Now wherever you listen to your podcasts!

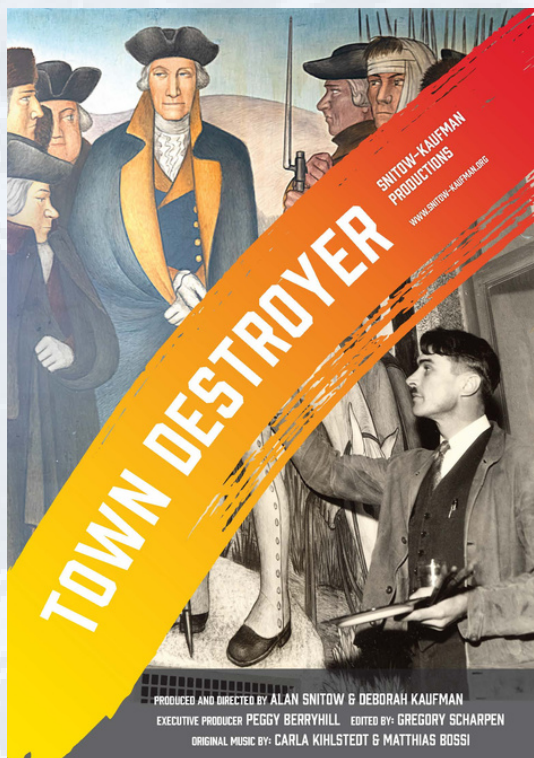
Programming



“To Fight One War with the Other”: Race, the War on Poverty, and the Vietnam Draft

February 8, 2023

LCHP Postdoctoral Scholar Ben Zdencanovic discussed his work on "Project 100,000," an initiative to recruit thousands of poor and working-class non-white men to serve in the Vietnam war.



Town Destroyer Film Screening and Panel Discussion

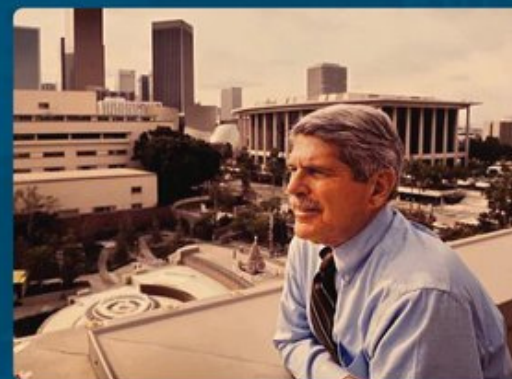
May 23, 2023

A mural depicting the life of George Washington shows him as both courageous founding father and destroyer of Native lands and people. Prominent in the mural is a life-size image of a Native American's body, prompting discussions with local students and communities about the intent of the mural and effect of such violent portrayals in public spaces.

ZEV'S LOS ANGELES

A Political
Memoir

From Boyle Heights
to the Halls of Power



Zev Yaroslavsky
with Josh Getlin

Book Event for Zev's Los Angeles

June 6, 2023

LCHP hosted a discussion and reception to celebrate the publication of Zev Yaroslavsky's new political memoir.

Summer Research Institute



The third LCHP Summer Research Institute attracted **more than 50 outstanding undergraduate and graduate students** who immersed themselves in historical research methods. This year we had students attend from as far away as Saudi Arabia, Bulgaria, and even Nepal! On June 27 and 28, 2023, students were exposed to the myriad ways in which historical research and knowledge can make a difference in the world. They learned about archival and data-driven research methods and examined different modes of applying historical knowledge to present-day problems and issues. SRI featured outstanding UCLA presenters who offered a wide range of expertise. They included: **Steve Aron, Dalena Hunter, Brenda Stevenson, Tawny Paul, Tyree Boyd-Pates, Rodrigo Dominguez-Villegas, and Bharat Venkat.**

Stay in touch!

Follow us to hear about LCHP activities in the coming year



@ucla.lchp



@ucla.lchp



@luskinhistory



Luskin Center for
History and Policy



luskincenter@
history.ucla.edu